



Standards and Certification Training

Module B – Process

**B3. Conformity Assessment: Committees and
Staff Roles and Responsibilities**

MODULE B COURSE OUTLINE

- B1. ASME Organizational Structure
- B2. Standards Development: Staff and Volunteer Roles and Responsibilities
- B3. Conformity Assessment: Committees and Staff Roles and Responsibilities**
- B4. Initiating and Terminating Standards Projects
- B5. Consensus Process for Standards Development
- B5A. Standards & Certification Project Management
- B6. The Basics of Parliamentary Procedure
- B7. The Appeals Process
- B8. International Standards Development
- B9. ASME Conformity Assessment Programs
- B10. Performance-Based Standards
- B11. Standards Inquiries, Interpretations and Cases

Module B contains eleven submodules. This is Module B3., Conformity Assessment: Committees and Staff Roles and Responsibilities

REVISIONS

<u>Date</u>	<u>Change</u>
06/30/26	Edited to align with current Committee Hierarchy and Policies Editorially revised – acronyms and BCA structure updated to be current
04/10/18	Revised and added new content for Conformity Assessment
06/30/14	Completely Revised the content and format of the entire Module
11/01/11	0 Minor changes to sub module titles 7, 9, 13, 14 and 16 Revised to remove ISO 9000 registration references 6, 11, 18 Updated to include current S&C Committees 19 Revised to note that ASME offers Team Leader Seminars
11/22/10	Changed “Codes and Standards Board of Directors” to “Council on Standards and Certification” throughout.

LEARNING OBJECTIVES

At the end of this module you will be able to:

- Understand the roles and responsibilities, related to conformity assessment, of the Council, the Board on Conformity Assessment and its associated committees
- Understand the roles of ASME Designees and Designated Organizations
- Describe the roles and responsibilities of ASME Staff and volunteers for Conformity Assessment

At the end of this module you will be able to:

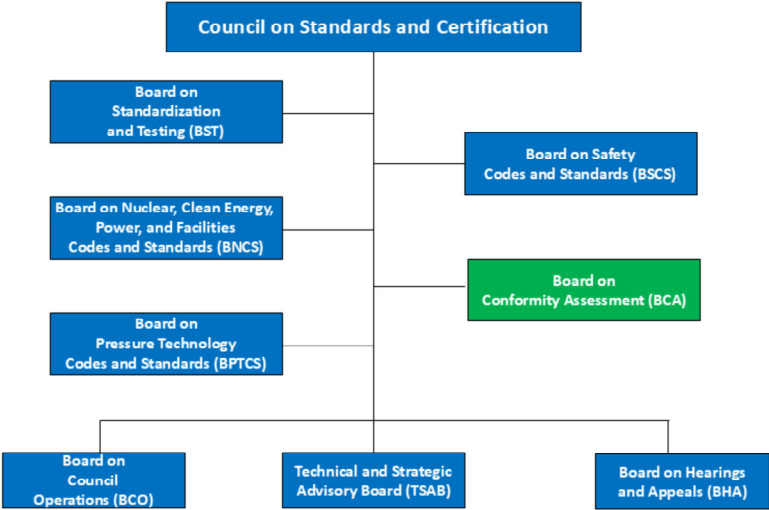
- Understand the roles and responsibilities, related to conformity assessment, of the Council, the Board on Conformity Assessment and its associated committees
- Understand the roles of ASME Designees and Designated Organizations
- Describe the roles and responsibilities of ASME Staff and volunteers of Conformity Assessment

MODULE OUTLINE

- I. Committee Hierarchy
- II. Council on Standards and Certification, Board and Committees
- III. ASME Designees, Designated Organizations, or Authorized Inspection Agencies
- IV. Conformity Assessment Staff
- V. Module Summary
- VI. References

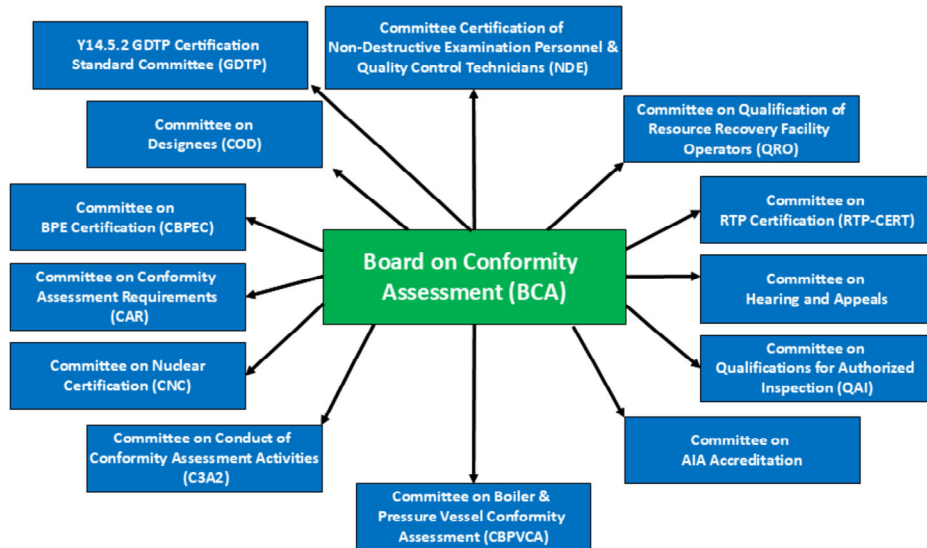
I. COMMITTEE HIERARCHY

COMMITTEE HIERARCHY



The Board on Conformity Assessment it is one of eight Boards reporting to the Council on Standards and Certification. It is charged with administering all ASME Certification and Accreditation Programs.

COMMITTEE HIERARCHY



The following committees report to the Board on Conformity Assessment

- Committee on Certification of Non-Destructive Examination Personnel and Quality Control Technicians (NDE)
- Committee on Designees (COD)
- Committee on BPE Certification (CBPEC)
- Committee on Conformity Assessment Requirements (CAR)
- Committee on Nuclear Certification (CNC)
- Committee on Conduct of Conformity Assessment Activities (C3A2)
- Committee on Qualification of Resource Recovery Facility Operators (QRO)
- Committee on RTP Certification (RTP-CERT)
- Committee on Hearings and Appeals
- Committee on Qualifications for Authorized Inspection (QAI)
- Committee on AIA Accreditation
- Committee on Boiler & Pressure Vessel Conformity Assessment (CBPVCA)
- Y14.5.2 GDTP Certification Standards Committee (GDTP)

Let's take a look at how each of these groups contribute to the process.

NOTE: Module B9, ASME Conformity Assessment Programs, addresses the relationship between the Board on Conformity Assessment activities and the standards committees reporting to other Supervisory Boards.

II. COUNCIL ON STANDARDS AND CERTIFICATION, BOARD ON CONFORMITY ASSESSMENT, AND CONFORMITY ASSESSMENT COMMITTEES

COUNCIL ON STANDARDS AND CERTIFICATION

Conformity Assessment responsibilities:

- Establish overall policies governing the operations and execution of accreditation and certification programs
- Approval of the initiation of Conformity Assessment activities, the revision of the scopes of Conformity Assessment programs, and the sunset of existing Conformity Assessment programs.
- Approval of Board on Conformity Assessment (BCA) membership, through the Board on Council Operations (BCO)
- Annual evaluation of S&C programs and activities
- Final level of appeal, through the Board on Hearings and Appeals (BHA)

Some of the specific responsibilities of the Council on Standards and Certification with regard to Conformity Assessment are:

- Establishment of overall policies governing the operations of accreditation and certification programs
- Approval of the initiation of Conformity Assessment activities, the revision of the scopes of Conformity Assessment programs, and the sunset of existing Conformity Assessment programs.
- Approval of the membership of the Board on Conformity Assessment (By Board on Council Operations)
- Annual evaluation of Standards and Certification programs and activities, to determine continuation or sun-setting
- The final level of due process within the Society for appeals related to accreditation and certification, accomplished through its Board on Hearings and Appeals

IMPORTANCE OF CONFIDENTIALITY WITHIN CONFORMITY ASSESSMENT

All Accreditation & Certification Committee meetings and correspondence are confidential

- All meetings are closed to the public
- Committees discuss confidential information about Applicants and Certificate Holders
- All Accreditation & Certification Committee members and Board on Conformity Assessment Members are required to sign a confidentiality statement (CAP-9)
- Board on Conformity Assessment appeals are confidential and closed meetings

All Accreditation & Certification Committee meetings and correspondence are confidential. All meetings are closed to the public. The reason being that the Committee discusses confidential information about Applicants and Certificate Holders. Per CAP-9, it is required that all Conformity Assessment Committees and BCA members and alternates sign a confidentiality statement, when appointed to the Committee or Board.

The Board on Conformity Assessment (BCA); Committee on Conformity Assessment Requirements (CAR); Committee on Conduct of Conformity Assessment Activities (C3A2); Committee on Designees (COD); and Standards Committee on Qualifications for Authorized Inspection (QAI); hold public meetings. The exception being that the Board on Conformity Assessment appeals are confidential and closed meetings.

BOARD ON CONFORMITY ASSESSMENT

- Supervises Conformity Assessment Programs
 - Approve Conformity Assessment procedures
 - Approve committee personnel
 - Monitor internal audit program
- Establishes policies for protection of the ASME Single Certification Mark
- Oversees the resolution of Accreditation and Certification requirement issues (with Standards Committees)
- Approves the selection criteria and procedures for ASME designees and ASME designated organizations as well as the selection of ASME designees by delegation to the BCA Committee on Designees
- Prepares and approves Conformity Assessment Policies (CAP)

Board on Conformity Assessment responsibilities include:

- Supervision of Conformity Assessment Programs, including
 - Approval of procedures including committee procedures and procedures on the conduct of ASME reviews, surveys, investigations and audits
 - Approval of committee personnel for committees reporting directly to BCA
 - Monitoring of the internal audit program. Internal audits are conducted for various aspects of the Conformity Assessment Programs (e.g., conduct of review/survey; conduct of Accreditation Subcommittee meeting; ASME Conformity Assessment Dept.; Designated Organization activities)
- Establishment of policies for protection of the ASME Single Certification Mark
- Works with Standards Committees on accreditation and certification requirement issues
- Approve criteria developed by the Committee on Designees for qualification of ASME Team Leaders and Designees. These roles will be discussed in later slides in this Module.
- Prepares and approves Conformity Assessment Policies (CAP)

Committee on Conformity Assessment Requirements (CAR)

Responsible for the development and maintenance of CA-1. This standard:

- includes the necessary ASME accreditation and product certification requirements
- was developed to consolidate and ultimately replace the conformity assessment requirements in all ASME Codes and Standards by reference to the CA-1 standard.
- does not cover personnel certification requirements

Committee on Conformity Assessment Requirements Committee is responsible for the development and maintenance of CA-1.

This standard:

- includes the necessary ASME accreditation and product certification requirements
- was developed to replace current conformity assessment requirements in all ASME Codes and Standards by reference to the CA-1 standard
- does not cover personnel certification requirements

COMMITTEE ON DESIGNEES (COD)

- Serves as the approval body for new Designees (e.g. ASME team leaders, team members and auditors).
- Establishes elements that provide for uniform qualification of Designees that participate in various ASME Conformity Assessment programs.
- Reviews allegations of misconduct of Designees and makes recommendations to the Board on Conformity Assessment.

The Committee on Designees (COD) is responsible for the following:

- Serves as an approval body for new Designees (e.g. ASME team leaders, team members and auditors. These will be discussed later on in this Module)
- Establishes elements that provide for uniform qualification of Designees that participate in various ASME Conformity Assessment programs.
- Reviews allegations of misconduct of Designees and makes recommendations to the Board on Conformity Assessment.

Committee on Conduct of Conformity Assessment Activities (C3A2)

Responsible for the development and maintenance of the following documents:

- Standard Qualification Criteria for Designees for Accreditation and Product Certification Activities
 - Establishes minimum requirements for all ASME Designees who either lead or participate on conformity assessment activities
 - Used for initial qualification and renewal of ASME Designee certification
- Conduct of ASME Surveys, Reviews, Audits, Investigations, and Interviews
 - These procedures establish guidance for conducting ASME surveys, reviews, audits, and investigation for all ASME certification and accreditation program
 - The purpose of these guidelines is to protect the ASME Single Certification Mark and ensure that the Applicant has demonstrated the ability to comply with requirements of applicable ASME Codes and Standards

Committee on Conduct of Conformity Assessment Activities (C3A2) is responsible for the following documents:

- Standards Qualification Criteria for Designees for Accreditations and Product Certification Activities and,
- Conduct of ASME Surveys, Reviews, Audits, Investigations and Interviews document

The Standards Qualification Criteria document:

- Establishes minimum requirements for all ASME Designees who either lead or participate on conformity assessment activities
- Used for initial qualification and renewal of ASME Designee certification

The conduct document:

- Establishes guidelines for the ASME Review Team for conducting ASME surveys, reviews, audits, and investigation for all ASME certification and accreditation programs. An important aspect of the guidelines for the ASME Team Leaders is ASME's Confidentiality and Due Process Policy which is part of the "Conduct Document."
- The purpose of these guidelines is to protect the ASME Single Certification Mark and ensure that the Applicant has demonstrated the ability to comply with requirements of applicable ASME Codes and Standards.

COMMITTEE ON QUALIFICATIONS FOR AUTHORIZED INSPECTION (QAI)

- Responsible for development and maintenance of the standard on Qualifications for Authorized Inspection (QAI-1), which includes requirements for:
 - accreditation of organizations as Authorized Inspection Agencies (AIA).
 - certification of individual Authorized Inspectors/Authorized Inspector Supervisors (AI/AIS) by the AIA.
 - certification of Certified Individuals (CI) by their employer.
- Accredits Authorized Inspection Agencies (AIA)
- Holds hearing on reports of misconduct or failure to provide adequate inspection services by AIAs.

The Committee on Qualifications for Authorized Inspection (QAI) is responsible for the development and maintenance of the standard on “Qualifications for Authorized Inspections” (QAI-1).

QAI-1 Standard provides requirements for:

- The accreditation of organizations as Authorized Inspection Agencies (AIA).
- The certification of individual Authorized Inspectors/Authorize Inspector Supervisors (AI/AIS). Certification is done by the AIA.
- The certification of Certified Individuals (CI). Certification is done by their employer.
 - For Boiler Code certification, the CI is certified by the Certificate Holder.

Additionally, the Committee on Qualifications for Authorized Inspection (QAI):

- Accredits organizations as ASME “Authorized Inspection Agencies” (AIA).
- Holds hearing on reports of misconduct or failure to provide adequate inspection services involving AIAs and may terminate or suspend ASME accreditation.
 - Note: For individual Inspectors, these Hearing would be conducted by the National Board and may result in the loss or suspension of the Inspector’s certification.

COMMITTEE ON CERTIFICATION OF NON-DESTRUCTIVE EXAMINATION PERSONNEL AND QUALITY CONTROL TECHNICIANS (ANDE)

Responsible for the development and maintenance of ANDE-1. This standard:

- Provides requirements for a central qualification and certification program conducted by a third-party certification organization (certifying body) for NDE and quality control (QC) personnel.
- Uses both performance-based and prescriptive requirements that serve as the program core for these activities.

The Committee on Designees (COD) is responsible for the following:

- Serves as an approval body for new Designees (e.g. ASME team leaders, team members and auditors. These will be discussed later on in this Module).
- Establishes elements that provide for uniform qualification of Designees that participate in various ASME Conformity Assessment programs.
- Reviews allegations of misconduct of Designees and makes recommendations to the Board on Conformity Assessment.

ACCREDITATION & CERTIFICATION COMMITTEES

- Committee on Boiler & Pressure Vessel Conformity Assessment (CBPVCA)
- Committee on Nuclear Certification (CNC)
- Committee on AIA Accreditation (CAA)
- Committee on RTP Certification (RTP-CERT)
- Committee on BPE Certification (CBPEC)
- Y14 Subcommittee 5.2 – Certification (GDTP)
- Committee on Qualification for Resource Recovery Facility Operators (QRO)
- Committee on Certification Non-Destructive Examination Personnel and Quality Control Technicians (ANDE)

Currently, the following accreditation & certification committees report to the Board on Conformity Assessment (BCA):

- Committee on Boiler & Pressure Vessel Conformity Assessment (CBPVCA)
- Committee on Nuclear Certification (CNC)
- Committee on AIA Accreditation (CAA)
- Committee on RTP Certification (RTP-CERT)
- Committee on BPE Certification (CBPEC)
- Y14 Subcommittee 5.2 – Certification (GDTP)
- Committee on Qualification for Resource Recovery Facility Operators (QRO)
- Committee on Certification Non-Destructive Examination Personnel and Quality Control Technicians (ANDE)

ACCREDITATION & CERTIFICATION COMMITTEES

Responsibilities

- Approve the issuance, renewal, extension, revision, suspension, and termination of ASME certification/accreditation based on reports submitted by ASME designees.
- Review and evaluate deficiencies, non-conformities, or alleged violations.
- Recommend program changes.
- Prepare committee procedures for BCA approval.
- Hear initial appeals or requests for re-consideration from Applicants or Certificate Holders.

As mentioned earlier, Accreditation and Certification Committees utilize existing ASME codes and standards developed by Standards Committees operating under other Boards.

They are responsible for:

- Approve the issuance, renewal, revision, suspension, and termination of ASME certification/accreditation based on reports submitted by ASME designees.
- Review and evaluate all apparent deficiencies, non-conformities, or alleged violations and the corrective actions taken.
- Recommend changes for the improvement of the conformity assessment programs.
- Prepare Accreditation and Certification Committee Procedures for BCA approval.
- Hear initial appeals or requests for re-consideration from Applicants and Certificate Holders on committee or Staff actions regarding certification and accreditation matters.

III. ASME DESIGNEES, DESIGNATED ORGANIZATIONS, OR AUTHORIZED INSPECTION AGENCIES

Some of the people and organizations performing the conformity assessment activities are not members of ASME staff or ASME committees. These are the ASME Designees and Designated Organizations, or Authorized Inspection Agencies.

ASME DESIGNEE

- An ASME Consultant under contract to ASME
- Shall be accepted by the Committee on Designees (COD) and obtain Certification as an ASME Designee.
- Acts on ASME's behalf for the purpose of performing reviews, surveys, audits, and examinations of organizations or persons holding, or applying for, accreditation or certification in accordance with the applicable ASME Code or Standard.
- For reviews for Boiler Code certification (non-nuclear) Designees can be employees of, or independent consultants under contract with any of the following:
 - ASME, Jurisdictional Authority, or ASME Designated Organizations (i.e. National Board)

An ASME Designee is:

- An ASME Consultant under contract to ASME
- Accepted by the BCA Committee on Designees (COD) based on criteria developed by C3A2, and approved by BCA, and obtain Certification as an ASME Designee
- Acts on ASME's behalf for the purpose of performing reviews, surveys, audits, and examinations of organizations or persons holding, or applying for, accreditation or certification in accordance with the applicable ASME Code or Standard
- For reviews for Boiler Code certification (non-nuclear), Designees can be employees of, or independent consultants under contract with any of the following:
 - ASME, Jurisdictional Authority, or ASME Designated Organizations (i.e. National Board)

ASME DESIGNEE

- Designees are prohibited from providing consulting services in any area which might lead to a conflict of interest.
- Designees who perform consulting services shall notify the Director, ASME Auditing and Conformity Assessment so they are not assigned to any Conformity Assessment activities.
- All Designees are required to sign an agreement to adhere to ASME policies.
- Qualification criteria for accreditation of a Designee is contained in “Standard Qualification Criteria for Designees for Accreditation and Product Certification Activities”.

- Designees are prohibited from providing consulting services in any area which might lead to a conflict of interest. Designees who perform consulting services shall notify the Director, ASME Auditing and Conformity Assessment so they are not assigned to any Conformity Assessment activities
- All Designees who are employed by, or under contract with ASME, Jurisdictional Authority, or ASME Designated Organization are required to sign an agreement to adhere to ASME policies and maintain confidentiality with regards to any information obtained while conducting an ASME review, survey, investigation or audit at an Applicant’s facility
- Qualification criteria for accreditation of a Designees performing accreditation and certification activities on behalf of ASME are contained in internal document “Standard Qualification Criteria for Designees for Accreditation and Product Certification Activities”

ASME DESIGNEE

- An ASME Designee may not be any of the following:
 - An employee of the Authorized Inspection Agency (AIA) performing "in-house" inspection for the organization under review
 - An employee of another organization applying for, or holding, ASME accreditation or certification in the program for which the individual is acting as a Designee
 - An individual having a financial interest in the organization being reviewed
- In cases where an ASME Designee has either worked for or provided consulting or inspection services to an Applicant, the ASME Designee is required to inform ASME of this situation

- An ASME Designee may not be any of the following:
 - An employee of the Authorized Inspection Agency (AIA) performing "in-house" inspection for the organization under review
 - An employee of another organization applying for, or holding, ASME accreditation or certification in the program for which the individual is acting as a Designee
 - An individual having a financial interest in the organization being reviewed
- In cases where an ASME Designee has either worked for or provided consulting or inspection services to an Applicant, the ASME Designee is required to inform ASME of this situation

ASME DESIGNATED ORGANIZATION (ADO)

The National Board of Boiler and Pressure Vessel Inspectors is the only current ASME Designated Organization and is qualified to conduct the following:

- BPV Team Leader Examinations to determine Code knowledge for type of boiler reviews Team Leader will perform.
- Boiler Code reviews on behalf of Jurisdictional Authorities when designated by the Jurisdiction
- All reviews of Pressure Relief Device Manufactures/Assemblers and Valve Testing Laboratory (PRD) reviews
- Team Leader Seminars for Continued Certification (Boiler Code only)

The National Board of Boiler and Pressure Vessel Inspectors is the only current ASME Designated Organization and is qualified to conduct the following:

- BPV Team Leader Examinations to determine Code knowledge for type of boiler reviews Team Leader will perform.
- Boiler Code reviews on behalf of Jurisdictional Authorities where the Jurisdiction due to lack of resources is unable to conduct Boiler reviews for companies located within their Jurisdiction. This only applies within the United States.
- all reviews of Pressure Relief Device Manufactures /Assemblers and Valve Testing Laboratory Reviews. This includes conducting reviews of Testing Labs and the personnel performing the testing, know as (Authorized Observers).
- Team Leader Seminars for Continued Certification. This function is also performed by ASME.

AUTHORIZED INSPECTION AGENCY OF RECORD (AIA)

- An organization that is accredited by ASME in compliance with QAI-1, Qualifications for Authorized Inspection.
- ASME accredited Authorized Inspection Agencies provide inspection service for ASME conformity assessment programs when third party inspection is required.
- The AIA shall perform all required inspections at the shop location identified on the Certificate of Authorization for the scope of work listed on the Certificate.
- As a requirement for obtaining and maintaining certain types of ASME Certificates of Authorization (BPVC Section I, III, IV, VIII, X and XII) the manufacturer must have an inspection contract or agreement with an ASME accredited Authorization Inspection Agency (AIA).

- An Authorized Inspection Agency is an organization that is accredited by ASME in compliance with the QAI-1 Standard.
- ASME accredited Authorized Inspection Agencies provide inspection service for ASME conformity assessment programs when third party inspection is required.
- The AIA shall perform all required inspections at the shop location identified in the Certificate of Authorization and for the type of work listed in the scope of the ASME Certificate of Authorization.
- As a requirement for obtaining and maintaining certain types of ASME Certificates of Authorization (BPVC Section I, III, IV, VIII, X and XII) the manufacturer must have an inspection contract or agreement with an ASME accredited Authorization Inspection Agency (AIA).

CERTIFIED INDIVIDUAL (CI)

- Requirements are outlined in the QAI-1 standard and the applicable Codes and Standards.
- Certified Individuals are:
 - Employees of the organization that holds the ASME Certificate (Certificate Holder).
 - Certified by the Certificate Holder via written examination as to knowledge of Code requirements and manufacturing process for the specific program.
 - Potentially responsible for signing data reports or certificates of conformance.
 - Used for certain types of Boiler Code activities as defined by the individual Boiler and Pressure Vessel Code Sections.
 - Used within the BPE and RTP Certification Program.

The Certified Individual (CI) is allowed under specific ASME certification programs within the Boiler and Pressure Vessel Code, BPE, and RTP to provide inspection services to the Certificate Holder.

Certified Individuals:

- Must comply with the requirements in the QAI-1 standard and the applicable Codes and Standards.
- Are employees of the Certificate Holder
- Must be certified by the Certificate Holder via written examination as to knowledge of Code requirements and manufacturing process for the specific program that allows for the use of a Certified Individual by the Certificate Holder.
- May be the Certificate Holder's authorized representative responsible for signing data reports or certificates of conformance.
- Are required to be used for certain types of Boiler and Pressure Vessel Code activities or for the BPE and RTP certification program.

NOTE: CI's are used in the following Boiler Code certification programs:

- UM (miniature pressure vessels) certification
- Manufacture/assembly of valves and rupture discs
- Manufacture/assembly of H[cast] heating boilers
- Mass production of certain types of Section I, IV, VIII, X and XII Code stamped items

IV. CONFORMITY ASSESSMENT STAFF

CONFORMITY ASSESSMENT STAFF

- Act as Secretary for the Board on Conformity Assessment (BCA) and Conformity Assessment Committees
- Perform administrative functions involved in the application for and issuance of Certificates, including new issuances, renewals, extensions, suspensions, terminations, and revisions.
 - Scheduling of surveys, reviews, audits, investigations, and interviews.
 - Review of technical reports submitted by ASME Designees for all ASME conformity assessment programs to determine if certification/accreditation should be issued.
 - Review of Quality Management System (QMS) Manual

The duties of Conformity Assessment's permanent staff include the following:

- Act as Secretary for the BCA and Conformity Assessment Committees
- Perform all administrative functions involved in the application for and issuance of Certificates, including new issuances, renewals, extensions, suspension, terminations, and interviews.
 - Scheduling of surveys, reviews, audits, investigations, and interviews
 - Review of technical reports submitted by ASME Designees for all ASME conformity assessment programs to determine if certification/accreditation should be issued
 - Review of Quality Management System (QMS) Manual review, when applicable

CONFORMITY ASSESSMENT STAFF

- Monitor and assure training of ASME Designees
- Issue Temporary Code (Shop) Authorization for up to one year
- Direct, coordinate and provide administrative support for ASME Designees
- Coordinate investigation of non-conformance by Certificate Holders
- Investigate improper use of the ASME Single Certification Mark
- Coordinate activities with other organizations
- Assure confidentiality

- Monitor and assure training of ASME Designees
- Issue Temporary Code (Shop) Use Authorization for up to one year for a Shop Operating under a Code Shop to perform Code activities Under the Certificates issued to the Code shop
- Direct, coordinate and provide administrative support for ASME Designees
- Coordinate investigation of possible non-conformance by Certificate Holders that comes to the attention of the Society
- Investigate improper use of the ASME Single Certification Mark on products or in advertising by Certificate Holders and those who do not hold ASME Certification or Accreditation
- Coordinate activities with other organizations, including jurisdictions and regulatory bodies
- Assure the confidentiality of information with regard to Applicants

V. MODULE SUMMARY

- ASME conformity assessment programs are administered by the ASME Board on Conformity Assessment (BCA) which reports to the Council on Standards and Certification
- The Committee on Designees (COD) develops the criteria and approves applicants as ASME Designees for specific types of certification programs administered by ASME.
- The Committee on Conduct of Conformity Assessment Activities (C3A2) establishes the criteria for conduct of reviews by ASME Designees to which staff member is assigned.
- The Committee on Conformity Assessment Requirements (CAR) maintains the CA-1 standard which defines conformity assessment requirements.

- ASME conformity assessment programs are administered by the ASME Board on Conformity Assessment which reports to the Council on Standards and Certification.
- The Committee on Designees (COD) develops the criteria and approves applicants as ASME Designees for specific types of certification programs administered by ASME.
- The Committee on Conduct of Conformity Assessment Activities (C3A2) establishes the criteria for conduct of reviews by ASME Designees for all ASME conformity assessment programs.
- The Committee on Conformity Assessment Requirements (CAR) maintains the CA-1 standard which defines the conformity assessment requirements.

V. MODULE SUMMARY

- The CA-1 standard is intended to eventually be referenced in all ASME codes and standards that have conformity assessment programs administered by ASME.
- The Committee on Qualifications for Authorized Inspection (QAI) maintains the QAI-1 standard, which
 - defines the criteria to accredit inspection organizations that perform third party inspections, and
 - contains criteria for the certification of individuals (CI) that perform inspections at facilities that have received ASME certification or accreditation.
- ASME accredited Authorized Inspection Agencies (AIAs) provide inspection service for ASME conformity assessment programs, when third party inspection is required.

- The CA-1 standard should be referenced in all ASME codes and standards that have conformity assessment programs administered by ASME.
- The Committee on Qualifications for Authorized Inspection (QAI) developed and maintains a standard (QAI-1) that defines the criteria to accredit inspection organizations that perform third party inspections and criteria for the certification of individuals (CI).
- ASME accredited Authorized Inspection Agencies provide inspection service for ASME conformity assessment programs, when third party inspection is required.

V. MODULE SUMMARY

- The National Board of Boiler and Pressure Vessels Inspectors is the only ASME Designated Organization (ADO) and conducts all reviews and provides oversight for ASME certified valve and rupture disc manufacturers and Valve Testing Laboratories.
- ASME Staff is responsible for administering all ASME conformity assessment programs including:
 - Processing of reports and issuance of ASME certification and accreditation to organizations and individuals having been audited by ASME Designees and recommended to receive certification.
 - Protection of the ASME Single Certification Mark.
 - Processing of allegations of misconduct by ASME Certificate Holders, Team Leaders and AIAs.
 - Handling issues related to certification programs (e.g. scheduling, extension requests, shop re-locations, name changes, QS Manual reviews, etc.).

- The National Board of Boiler and Pressure Vessels Inspectors is the only ASME Designated Organization and conducts all reviews and provides oversight for ASME certified valve and rupture disc manufacturers and Valve Testing Laboratories
- ASME STAFF is responsible for administering all ASME conformity assessment programs including:
 - Processing of reports and issuance of ASME certification and accreditation to organizations and individuals having been audited by ASME Designees and recommended to receive certification
 - Protection of the ASME Single Certification Mark
 - Processing of allegations of misconduct by ASME Certificate Holders, Team Leaders and AIAs
 - Handling issues related to certification programs (i.e. scheduling, extension requests, shop re-locations, name changes, QS Manual reviews, etc.)

VI. REFERENCES

- ASME C&S Policies, Procedures, and Guides:
<https://cstools.asme.org/csconnect/CommitteePages.cfm?Committee=100726310&Action=7609>
- Codes and Standards Policy (CSP)
<https://cstools.asme.org/csconnect/FileUpload.cfm?View=yes&ID=59993>
- Conformity Assessment Policies (CAP)
[https://cstools.asme.org/csconnect/Filedownload.cfm?thisfile=3729.pdf&dir=CommitteeFiles&DownloadFileName=Conformity%20Assessment%20Policies%20\(OCT%202025\)&preview=true&46162.5830671](https://cstools.asme.org/csconnect/Filedownload.cfm?thisfile=3729.pdf&dir=CommitteeFiles&DownloadFileName=Conformity%20Assessment%20Policies%20(OCT%202025)&preview=true&46162.5830671)
- Standard Qualification Criteria for Designees for Accreditation and Product Certification Activities
<https://cstools.asme.org/csconnect/FileUpload.cfm?View=yes&ID=59903>

VI. REFERENCES

- Conduct of ASME Surveys, Reviews, Audits, Investigations and Interviews <http://cstools.asme.org/csconnect/FileUpload.cfm?View=yes&ID=3720>
- Application for ASME Certification/Accreditation Programs <http://www.asme.org/shop/certification-accreditation>
- CA-1, Conformity Assessment Requirements – <http://www.asme.org/codes-standards/find-codes-standards/conformity-assessment-requirements>
- QAI-1, Qualifications for Authorized Inspection <https://www.asme.org/codes-standards/find-codes-standards/qualifications-for-authorized-inspection>